

EN

## ULTRASONIC AROMA DIFFUSER BEWIT Rainbow



User Manual

### **Product description**

The aroma diffuser is designed to use the best of both oriental culture and the latest knowledge and technology of western science. Using ultrasound, the device breaks down essential oil and water into a mist of microparticles and releases active ingredients and anions into the air.

Ultrasonic technology does not heat the essential oil and preserves all its positive therapeutic effects.

## Warning

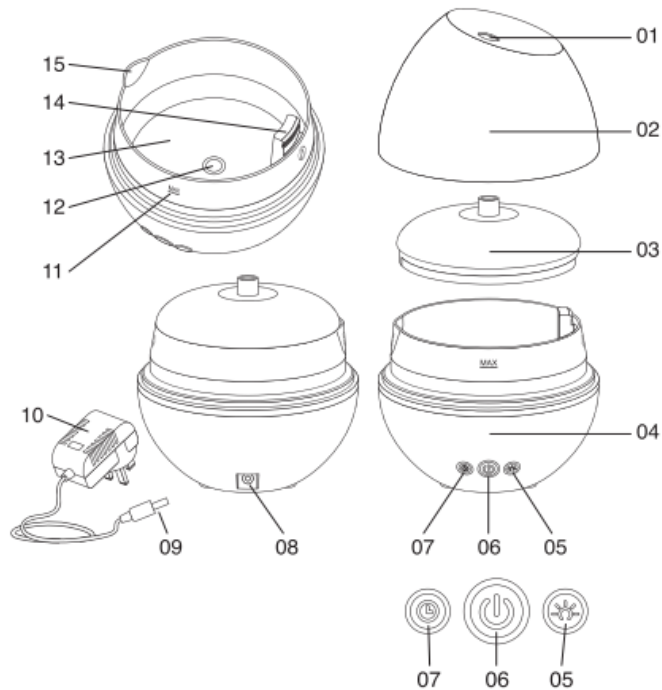
Please read carefully the following safety precautions before using this unit. The safety precautions listed below are intended to prevent you and others from injury or to prevent damage to the product.

The manufacturer is not responsible for any damage caused by incorrect use of the product.

- The appliance is not to be used by persons (including children) with reduced physical, sensory or mental capabilities, or lack of experience and knowledge, unless they have given supervision or instruction. The device must only be used with the power supply provided.
- Please don't dismantle, modify, heating the unit. Do not cut, damage, modify the power cord or put weight on the power cord. It might cause an electric shock or fire.
- Solely for ambient diffusion with essential oils or home fragrances – do not inhale.
- Do not use pure essential oils or home fragrances without water.
- Only use mineral water (bottled water or tap water). Be sure not exceed the maximum water level. Always pour in the water before adding the essential oils or ambient fragrance. Please use other container to add water. Don't fill in the tank from water-tap directly. Only put water & essential oil or home fragrances in the water tank. Other liquids may cause irreparable damage to the unit.
- If the unit smokes, has a strange smell, or have any abnormal situation, please stop using it immediately.
- Do not touch any part of the unit with wet hands.
- Do not let the mist spray on the furniture, clothes, wall directly.
- The essential oil may cause dye. Please use clean cloth wipe up if splashed out accidentally.
- Please unplug the unit when not use.
- Do not cover the unit with anything when it is working.

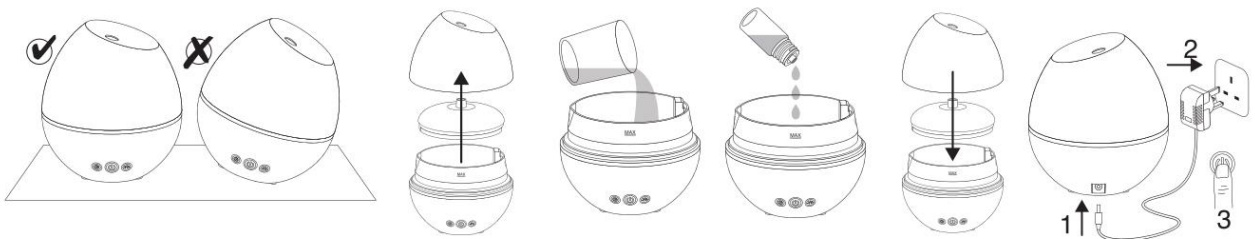
## Description

01. Mist Outlet
02. Art Glass Cover
03. Inner Cover
04. Base
05. Light Button
06. ON/OFF Button
07. Timer Button
08. DC Jack
09. Connector
10. AC/DC Adaptor
11. Max water level line
12. Ceramic Disc
13. Water tank
14. Air Outlet
15. Water spout to empty water tank



## Instructions

1. Use in an environment that is between 10°C and 30°C. Avoid placing the unit in direct sunlight, on a wet surface or dusty place.
2. Place the diffuser on a flat, stable surface, away from the edge of table or furniture.
3. Remove carefully the fragile Glass outer cover & Remove the inner cover.
4. Fill the reservoir with mineral water (bottled water or tap water): do not exceed the maximum water level.
5. Add a few drops of water soluble fragrance or essential oil (5 to 7 drops depending on intensity you choose) to the water tank.
6. Replace the inner cover & the outer cover on the diffuser.



## Functions

### On/Off Button:

- First press: The unit enters into continuous mist mode.
- Second press: Intermittent mist mode. (ON 30 sec, OFF 30 sec until water is used up or diffuser stopped)
- Third press: Turn off the unit.

### Light Button:

- First press: Turn on the color changing light – there are 7 colors changing automatically.
- Second press: Select the color you want by pushing on button once that color is showing
- Third press: Warm white light only
- Fourth Press: Lights off.

### Timer Button:

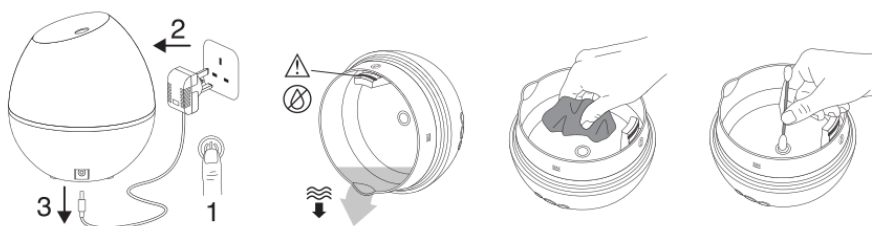
- First press: Timer function 1 hour & than OFF.
- Second press: Timer Function OFF

**Remark:** By pressing continuously 6 seconds on the ON/OFF button you can put lights of buttons out.

When the water level in the reservoir is insufficient or empty, the diffuser will stop automatically. When this happens, fill the reservoir with water following the instructions to return to normal function. The diffuser can also be used as Ambiance Light – Without diffusion

## Maintenance

- We advise you to pour out the water completely and wipe up the unit with soft cloth after each use. If you don't use the unit for a long time, make sure you pour out any remaining water completely in the tank and store it at dry place.
- Please clean the unit as per the maintenance instructions before using a new type of essential oil or home fragrance.
- Clean the water reservoir at least each week & preferably after 5-6 times using. Do not use chemical products (such as acids...etc.) or corrosive detergents to clean the device. Do never submerge the device in water.
- Do not allow the metal objects or sharp object (like pin, key) to be in contact with the ultrasonic mist plate.



## **Guarantee**

This product has been rigorously tested before leaving the manufacturer. During the legal warranty period from the date of purchase, you can request a free repair or replacement for defects caused by normal use. If necessary, contact the seller of the product. Failures resulting from accidents, improper use or maintenance are not covered.



BEWIT Natural Medicine s.r.o.  
Michalská 2030,  
710 00 Ostrava  
Tel.: (+420) 731 739 539  
Email: [info@bewit.cz](mailto:info@bewit.cz)  
[www.BEWIT.love](http://www.BEWIT.love)